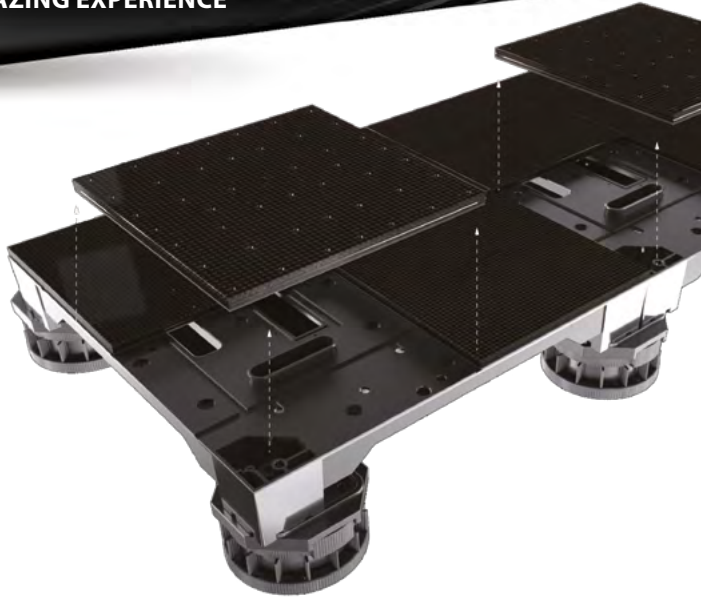


# TERRA LDSOSP03.9TE

RESPONSIVE INTERACTIVE EFFECT ENABLES TERRA SERIES TO DELIVER STRONG VISUAL IMPACT AND TRULY AMAZING EXPERIENCE



TECHNICAL SPECIFICATIONS



- Real time interactive effect provides amazing experience
- 64 pcs touch sensors on each panel
- 33 milliseconds response time for each sensor
- 180 degree wide viewing angle from any direction
- 15 mm vertical adjustment
- 2 ton/sqm super strong load-bearing performance

TRT STUDIO  
ISTANBUL / TURKEY



## General

Operating environment	indoor
Pixel pitch	3.9mm
Smart front service	YES
Calibrated brightness (nits)	3.000nits
Lamp type	SMD
Lifespan (hours at %50 brightness)	>100.000hours
White color calibration (adj.)	3.500K~8.500K
Gray scale	>14bits
Brightness control	256 level

## Module Specifications

Module dimensions (mm)	250x250
Refresh frequency	adjustable
Module resolution	64x64px
LED drive method	dynamic
Module material	aluminum
Module type	sealed
PCB type	multilayer
PCB surface coating	humiseal

## Panel Specifications

Panel material	aluminum
Panel paint	ES powder coated
Panel dimensions (mm)	500x500
IP level	IP65 front, IP65 rear
Panel weight	14kg
Panel resolution	128x128px
Pixel density (pcs/sqm)	21.904
Viewing angle (horizontal x vertical)	>140° x 140°
Minimum viewing distance	>3m
Operating temperature range	-20°C ~ +60°C
Storage temperature range	-25°C ~ +60°C
Operating humidity	10% ~ 90% non-condensing
Power input voltage	110 ~ 240 VAC
Power input frequency	50 ~ 60 Hz
Average power per sqm	<160W
Max power per sqm	<640W
Active PFC	YES
Load tolerance <sup>1</sup>	25% min.
Panel installation type	Fixed installation
Cooling	Passive cooling

## Other

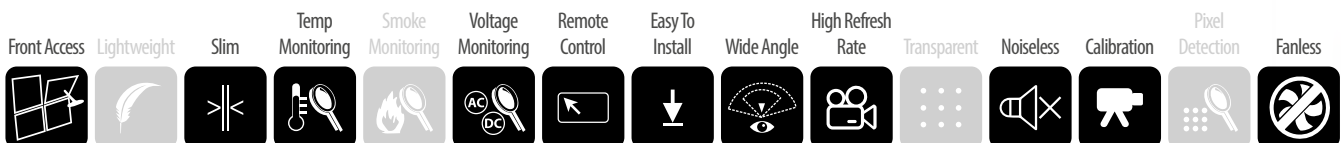
Max input resolution	FHD, UHD, 4K, 8K
Standard video sources <sup>2</sup>	All digital formats
Brightness adjustment	Automatic & manual
Death pixel monitoring	Optional
Module monitoring	YES
Temperature monitoring	YES
Smoke monitoring	Optional
Voltage monitoring	YES
Power redundancy	N/A
Signal path backup	YES
Signal transmission	CAT or Fiber Optic
Standby scheduling	YES
Power on/off scheduling	Optional
Power saving mode	YES
Certification	CE-EMC, CE-LVD, RoHS, FCC

## Options

\*The mechanical and electronic specification options are available.

<sup>1</sup> - That value is the remain capacity of PSU's at 100% brightness and white color content

<sup>2</sup> - Different types of video input available as option



Apron Teknoloji AS. reserves the right to change any product specification, discontinue of any product or services without prior notice

LEDECA