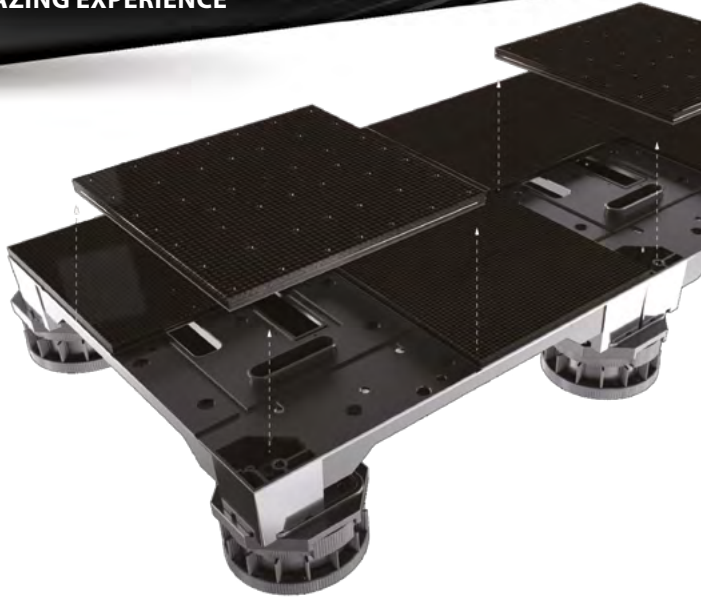


TERRA LDSOSP02.6TE

RESPONSIVE INTERACTIVE EFFECT ENABLES TERRA SERIES TO DELIVER STRONG VISUAL IMPACT AND TRULY AMAZING EXPERIENCE



TECHNICAL SPECIFICATIONS



- Real time interactive effect provides amazing experience
- 64 pcs touch sensors on each panel
- 33 milliseconds response time for each sensor
- 180 degree wide viewing angle from any direction
- 15 mm vertical adjustment
- 2 ton/sqm super strong load-bearing performance

TRT STUDIO
ISTANBUL / TURKEY



General

Operating environment	indoor
Pixel pitch	2.6mm
Smart front service	YES
Calibrated brightness (nits)	1.200nits
Lamp type	SMD
Lifespan (hours at %50 brightness)	>100.000hours
White color calibration (adj.)	3.500K~8.500K
Gray scale	>13bits
Brightness control	256 level

Module Specifications

Module dimensions (mm)	250x250
Refresh frequency	adjustable
Module resolution	96x96px
LED drive method	dynamic
Module material	aluminum
Module type	sealed
PCB type	multilayer
PCB surface coating	humiseal

Panel Specifications

Panel material	aluminum
Panel paint	ES powder coated
Panel dimensions (mm)	500x500
IP level	IP65 front, IP65 rear
Panel weight	14kg
Panel resolution	192x192px
Pixel density (pcs/sqm)	44,944
Viewing angle (horizontal x vertical)	>140° x 140°
Minimum viewing distance	>2m
Operating temperature range	-20°C ~ +60°C
Storage temperature range	-25°C ~ +60°C
Operating humidity	10% ~ 90% non-condensing
Power input voltage	110 ~ 240 VAC
Power input frequency	50 ~ 60 Hz
Average power per sqm	<160W
Max power per sqm	<640W
Active PFC	YES
Load tolerance ¹	25% min.
Panel installation type	Fixed installation
Cooling	Passive cooling

Other

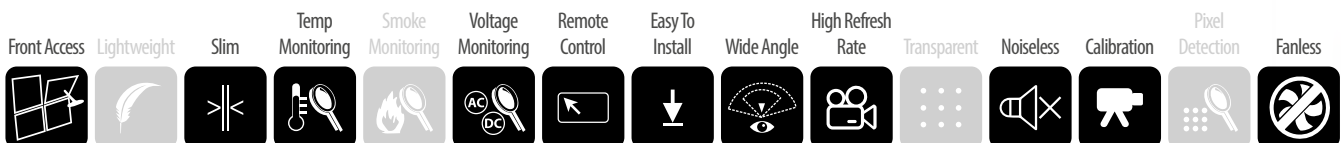
Max input resolution	FHD, UHD, 4K, 8K
Standard video sources ²	All digital formats
Brightness adjustment	Automatic & manual
Death pixel monitoring	Optional
Module monitoring	YES
Temperature monitoring	YES
Smoke monitoring	Optional
Voltage monitoring	YES
Power redundancy	N/A
Signal path backup	YES
Signal transmission	CAT or Fiber Optic
Standby scheduling	YES
Power on/off scheduling	Optional
Power saving mode	YES
Certification	CE-EMC, CE-LVD, RoHS, FCC

Options

*The mechanical and electronic specification options are available.

¹ - That value is the remain capacity of PSU's at 100% brightness and white color content

² - Different types of video input available as option



Apron Teknoloji AS. reserves the right to change any product specification, discontinue of any product or services without prior notice

LEDECA