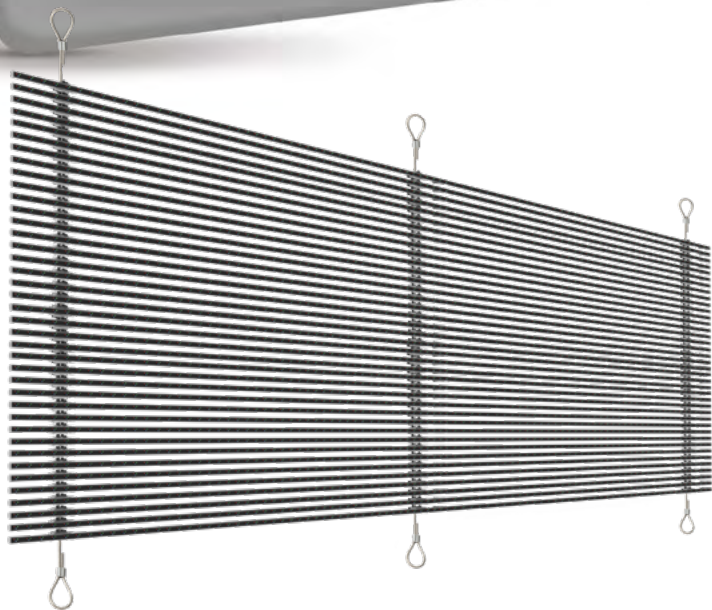


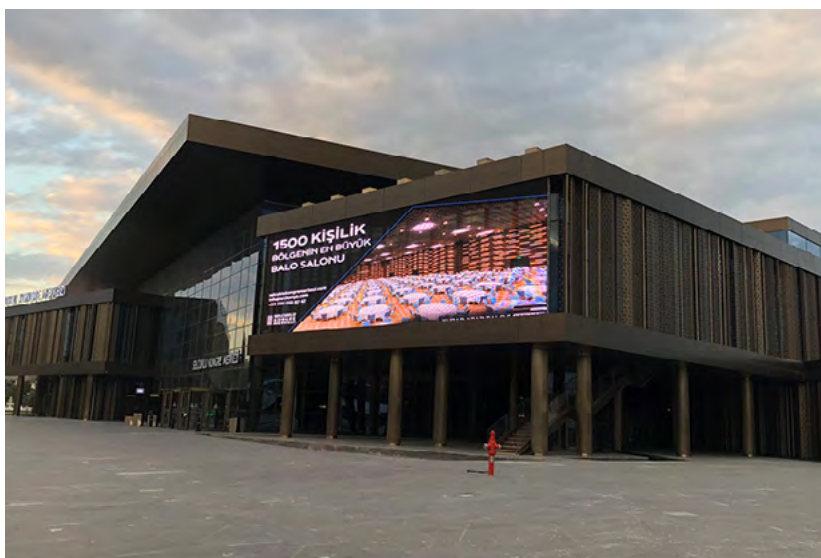
FACADE LDAOTP25.0FA

TRANSPARENT LED CURTAIN FOR
ARCHITECTURAL FACADE APPLICATIONS



- Right choice for facades with front or rear access
- Intelligent construction for ultra-thin frame depth
- Lightweight for easy adaptation and low cost framework design
- The right solution for architectural and facade installations
- Improved mask structure that increases viewing angle

KONYA CONGRESS CENTER KONYA / TURKEY



General

Operating environment	outdoor
Pixel pitch	25mm
Service type	front and rear access
Calibrated brightness (nits)	7,000nits
Lamp type	DIP
Lifespan (hours at %50 brightness)	>100,000hours
White color calibration (adj.)	3,500K~8,500K
Gray scale	>16bits
Brightness control	256 level

Module Specifications

Module dimensions (mm)	2,700x10
Refresh frequency	adjustable
Module resolution	108x1px
LED drive method	dynamic
Module material	aluminum
Module type	sealed
PCB type	multilayer
PCB surface coating	humiseal

Panel Specifications

Panel material	aluminum strip
Panel paint	ES powder coated
Panel dimensions 'mm'	adjustable
IP level	IP65 front and rear
Transparency ratio	~46%
Panel weight	-
Panel resolution	108 (per strip)
Pixel density (pcs/sqm)	1,600
Viewing angle (horizontal x vertical)	>120° x 120°
Minimum viewing distance	>25m
Operating temperature range	-15°C ~ +50°C
Storage temperature range	-20°C ~ +60°C
Operating humidity	10% ~ 90% non-condensing
Power input voltage	110 ~ 240 VAC
Power input frequency	50 ~ 60 Hz
Average power per sqm	<100W
Max power per sqm	<600W
Active PFC	YES
Load tolerance ²	25% min.
Panel installation type	Fixed installation
Cooling	Passive cooling

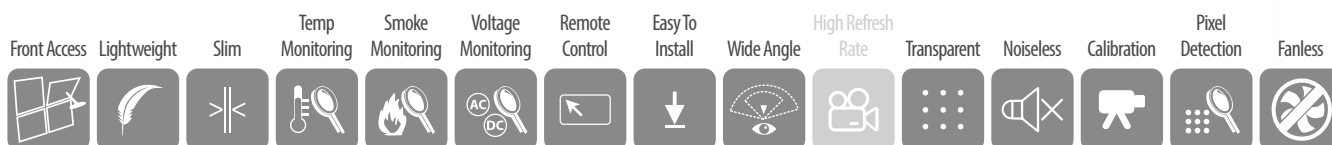
Other

Max input resolution	FHD, UHD, 4K, 8K
Standard video sources ³	All digital formats
Brightness adjustment	Automatic & manual
Death pixel monitoring	Optional
Module monitoring	YES
Temperature monitoring	YES
Smoke monitoring	Optional
Voltage monitoring	YES
Power redundancy	N/A
Signal path backup	YES
Signal transmission	CAT or Fiber Optic
Standby scheduling	YES
Power on/off scheduling	Optional
Power saving mode	YES
Certification	CE-EMC, CE-LVD, RoHS, FCC

Options

*The mechanical and electronic specification options are available.

- 1- Panel dimensions can change upon customer request
- 2- That value is the remain capacity of PSU's at 100% brightness and white color content
- 3- Different types of video input available as option



Apron Teknoloji AS. reserves the right to change any product specification, discontinue of any product or services without prior notice