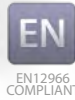
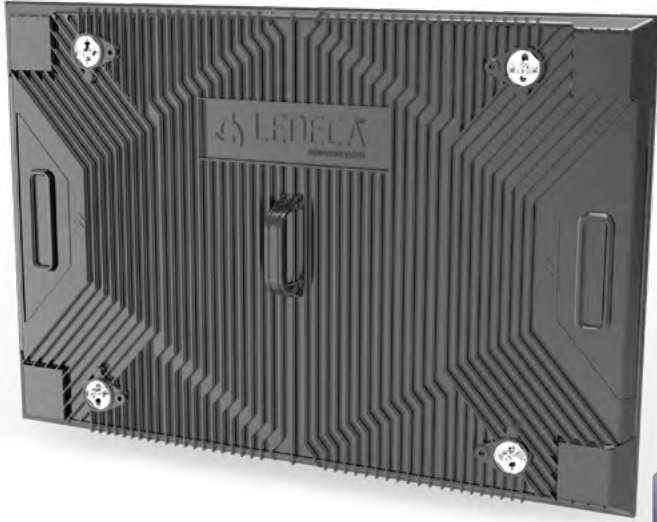


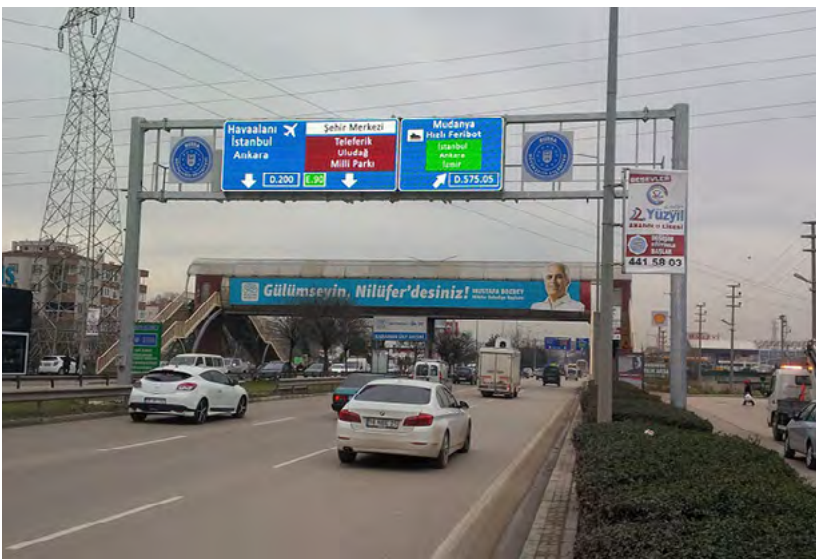
TRAFFIC LDAOTP20.0XT

DIGITAL VARIABLE MESSAGE AND TRAFFIC
SIGNS FOR TRAFFIC INDUSTRY



- EN 12966 compliance
- Intelligent structure for remote monitoring
- SMD LED with Optical Lens design
- Supports LED failure detection
- Real-Time monitoring system and feedback system support
- Power supply redundant support
- Optical lens made of anti-UV PC material, avoiding yellowing on the lens
- No louver design, preventing snow from piling up in bad weather

BURSA VMS
BURSA / TURKEY



General

Operating environment	outdoor
Pixel pitch	20mm
Service type	front and rear access
Calibrated brightness (nits)	L3
Lamp type	SMD
Lifespan (hours at %50 brightness)	>100.000hours
Color coordinates	C2
Contrast ratio	R3
Beam Width	B6
Brightness control	100 level

Module Specifications

Module dimensions (mm)	160x320
Refresh frequency	adjustable
Module resolution	8x16px
LED drive method	static
Module material	PC&Fiberglass
Module type	sealed
PCB type	multilayer
PCB surface coating	humiseal

Panel Specifications

Panel material	aluminum
Panel paint	ES powder coated
Panel dimensions (mm)*	adjustable
IP level	P3
Panel weight	adjustable
Panel resolution	adjustable
Pixel density (pcs/sqm)	2.500
Communication way	RS485,RS232,RJ45,Profibus
Communication protocol	NTCIP
Operating temperature range	T3
Storage temperature range	-40°C ~ +60°C
Operating humidity	10% ~ 95% non-condensing
Power input voltage	100~260 VAC
Power input frequency	50~60 Hz
Average power per sqm	<350W
Max power per sqm	<650W
Active PFC	YES
Load tolerance ²	25% min.
Cooling	passive cooling
Compliance	EN12966

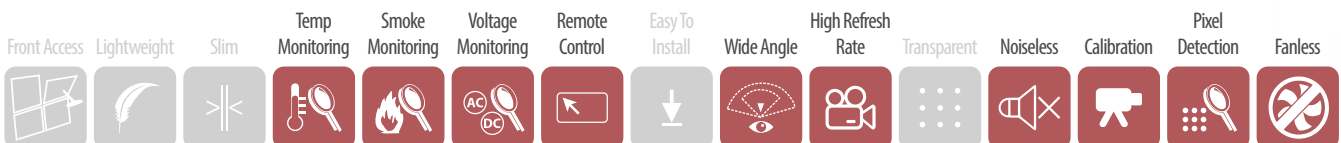
Other

Max input resolution	Adjustable
Standard video sources ³	N/A
Brightness adjustment	Automatic & manual
Death pixel monitoring	YES
Module monitoring	YES
Temperature monitoring	YES
Smoke monitoring	Optional
Voltage monitoring	YES
Power redundancy	YES
Signal path backup	YES
Signal transmission	CAT or Fiber Optic
Standby scheduling	YES
Power on/off scheduling	YES
Power saving mode	YES
Certification	CE-EMC, CE-LVD, RoHS, TUV, EN12966, FCC

Options

*The mechanical and electronic specification options are available.

- Panel dimensions can change upon customer request
- That value is the remain capacity of PSU's at 100% brightness and white color content
- Different types of video input available as option



Apron Teknoloji AS. reserves the right to change any product specification, discontinue of any product or services without prior notice

TECHNICAL SPECIFICATIONS

LEDECA